

Laboratory essentials benchtop equipment



01

Vortex Mixers
Pages 3-4

02

Rollers & Rotators
Pages 5-8

03

Magnetic Stirrers
Pages 9-15

04

Overhead Stirrers
Pages 16-17

05

Thermal Dry bath
Page 18

06

Incubator
Page 19

07

Homogenizers
Page 20

08

Shaker
Pages 21-24



BLDC Motor



Counter balance for stable operation



Tiny footprint



BLDC Motor



Counter balance for stable operation



Optional attachments for different shaking applications



MINI VORTEXMIXERS

- Tiny Vortexer with small footprint
- Delivers upto 4500 RPM (VWRA444-1149) for thorough mixing & quick vortexing
- Brushless DC motor (VWRA444-1149) for maintenance free long life
- Orbital diameter of 4.5mm
- Smart and Robust design - press activation with suspension
- Robust construction with Die cast Aluminum base and rubber vaccum pads for stable and silent operation
- Inbuilt counterbalance for stable operation

Specifications	VWRA444-1146	VWRA444-1149
Max RPM	3500 RPM	4500 RPM
Orbital diameter	4.5 mmØ	
Motor Type	DC motor	Brushless DC motor
Speed Setting	No	Yes
Max tube diameter	30 mm	
Max Load Capacity	100 gm	
Pressactivation	Yes	
Protection class	IP43	
Dimensions (L x W x H)	100 x 100 x 70 mm	
Weight	550 gms	

Description	Cat. No.
Mini Vortexer, Fix Speed 3500 RPM	VWRA444-1146
Mini Vortexer, Speed 4500 RPM	VWRA444-1149

VORTEXMIXER

- 3 way switch (On/Off/Touch)
- Brushless DC motor for maintenance free long life (VWRA444-1147)
- Orbital diameter of 4mm
- Adjustable speed
- Inbuilt counter balance for stable & safeoperation
- Timer setting 0 to 999 minutes (VWRA444-1147)
- Digital display toggles between speed and time every 5 second (VWRA444-1147)
- Programmable pulse mode function (VWRA444-1147)
- Silent operation
- Robust construction for stable operation
- Universal Power Supply (VWRA444-1147)

Specifications	VWRA444-1148	VWRA444-1147
Max RPM	2800 RPM	4200 RPM
Orbital diameter	4 mmØ	
Motor Type	ACMotor	Brushless DC
Digital Display	No	Yes
Max Load Capacity	500 gm	
Speed Setting	Yes	
Timer Setting	No	Yes (min/sec)
Dimensions (L x W x H)	205 x 136 x 138.5 mm	
Weight	3 Kgs	
Power Supply	220 VAC	24VDC

Description	Cat. No.
Analog Vortex Mixer, Speed 2800 RPM	VWRA444-1148
Digital Vortex Mixer , Speed 4200 RPM	VWRA444-1147
Microplate Attachment	VWRA444-1150
Tube Attachment	VWRA444-1151
Round Disk Attachment (with Base)	VWRA444-1152
250 mL Flask Holder Attachment	VWRA444-1153

*supplied with round disk & cup attachments as standard accessory



BLDC Motor



Microprocessor Controlled



Digital Display



Pulse Mode



VWRA444-1155



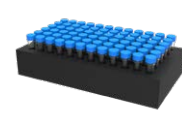
VWRA444-1156



VWRA444-1157



VWRA444-1158



VWRA444-1159



VWRA444-1160

DIGITAL MULTI TUBE VORTEXER WITH A MICROPROCESSOR & BRUSHLESS MOTOR

- Brushless DC motor for quiet operation and maintenance free long operation.
- Microprocessor controlled vortex mixer with variable speed and time setting along with last run memory function.
- Adjustable speed ranging from 300-2500 RPM with increment of 1 RPM and accuracy of $\pm 5\%$ RPM with option of electing Clockwise (CW) and Counterclockwise (CCW) motion
- Long timer setting from 1 to 999 mins & infinite mode.
- Programmable pulse mode with variable time selection of 30 – 99 seconds
- Power Overload feature – Automatic shutdown in case of higher power consumption than equipment capacity.
- Supplied with all five foam base attachments

Specifications	Description
Digital Display	Yes
Variable Speed	300-2500 RPM
Motor Type	Brushless DC motor
Run Time	1-999 mins & infinite
Motion Type	Clockwise (CW) and Counterclockwise (CCW) motion
Pulse Mode	Programmable Pulse with selection of variable time 30-99 seconds
Dimensions (L x W x H)	400 x 249 x 440 mm
Weight	17.6 Kgs
Input Voltage	24 V
Power Consumption	75 W
Protection class	IP21

Description	Cat. No.
Digital Multitube Vortex	VWRA444-1154
Attachment for 60x7 mL Tubes	VWRA444-1155
Attachment for 45x15 mL Tubes	VWRA444-1156
Attachment for 18x50 mL Tubes	VWRA444-1157
Attachment for 6x250 mL Flasks	VWRA444-1158
Attachment for 72x1.5/2.0 mL Tubes	VWRA444-1159
Foam Attachment	VWRA444-1160

* supplied with



Buying on VWR Lab Supplies is as easy as 1-2-3-4

1. REGISTER



2. EXPLORE



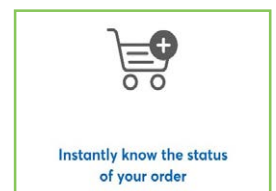
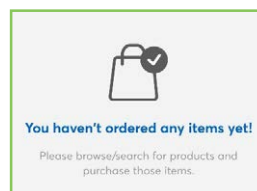
3. SELECT



4. ORDER

Registration form with fields for Email/Username and Password, a LOGIN button, and links for Register and Forgot Password.

Browse Categories screen showing a search bar, a category list (A-Z), and a list of items including Adhesives, Aluminum Foil, and Ampules.





30 RPM
fixed speed



Tool free
detachable rollers



Silent operation

FOUR TUBE ROLLER

- Gentle rocking and rolling motion for optimum mixing
- 30 RPM fixed speed with ± 2 RPM speed accuracy
- Continuous / infinite mode of operation
- Tilt angle of $\pm 3^\circ$
- Tool free removal / installation of rollers for easy cleaning
- Adjustable rollers spacing to hold different diameter tubes
- Suitable for mixing of blood sample and viscous substances
- Small footprint saving valuable bench space
- Works with 80% humidity and 40°C
- Protection class of IP 21
- Robust construction for stable operation

Specifications	Description
Capacity	9 x 5 ml tubes
Motor Type	ACSynchronous
Speed	Fix Speed of 30 RPM
Run Time	Continuous / Infinite
Tilt Angle	$\pm 3^\circ$
Speed Accuracy	± 2 RPM
Load Capacity	1.5 Kg
Roller Size	30 x 330mm
Protection class	IP21
Dimensions (L x W x H)	475 x 210 x 80 mm
Weight	2.42 Kgs

Description	Cat. No.
Tube Roller,with 4 Rollers	VWRA444-1161



Individual Time
and Speed Display



Brushless DC
Motor



Tool free
detachable Rollers



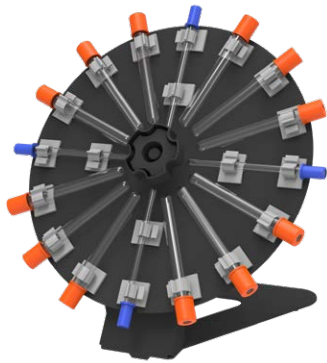
Programmable
Pulse Mode

DIGITAL TUBE ROLLER WITH A MICROPROCESSOR & BRUSHLESSMOTOR

- Brushless DC motor for quiet operation and maintenance free long life
- Tool free detachable rollers for easy cleaning in case of spillage
- Individual Time and Speed display, and soft touch keys for easy reading and parameter setting
- Microprocessor controlled tube roller with variable speed and time setting, along with last run memory function
- 10 to 80 RPM speed range, 1 min to 99 min timer and continuous mode
- User programmable - save up to 9programs
- Programmable pulse mode feature
- Gentle rocking and rolling motion for proper mixing
- Stackable design with robust construction for stable operation

Specifications	Description
Motor Type	Brushless DC motor
Motion	Rocking & Rolling
Number of tubes	15 x 7 ml Blood Tubes
Speed Range	10 to 80 RPM
Timer Range	1 to 99 mins
Operation Type	Continuous & Timed Operation
Removable Rollers	Yes
Pulse Mode	Yes
Tilt Angle	$\pm 3^\circ$
Protection Class	IP21
Weight	4.5 Kgs
Permissible ambient Temp.	5°C to 40°C
Dimensions (L x W x H)	502 x 92.5 x 301 mm

Description	Cat. No.
Digital Tube Roller with 6 Rollers	VWRA444-1162



Silent operation



Accuracy of +/- 2 RPM

DISK ROTATOR

- AC synchronous motor for noiseless operation
- Accommodates upto 4 ESR Tubes & 12 Blood collection tubes
- Circular rotation motion for gentle yet effective mixing
- 30 RPM fixed speed with +/- 2 RPM accuracy
- Continuous/ Infinite operation modes
- Fix disc plate angle of 38 degrees
- Robust construction, strong metal design

Specifications	Description
Capacity	16 Tubes (12 Blood Collection Tubes + 4 ESR Tubes)
Motor Type	AC Synchronous
Fixed Speed	30 RPM
Run Time	Continuous / Infinite
Speed Accuracy	± 2RPM
Angle of Disc Plate	Fix angle of 38 degrees
Weight	1.5 Kgs
Dimensions (L x W x H)	278 x 183 x 252 mm
Protection class	IP21

Description	Cat. No.
Disc Rotator, Fix 30 RPM	VWRA444-1165



VWRA444-1166



VWRA444-1167



VWRA444-1168



VWRA444-1169



VWRA444-1170



VWRA444-1171



Microprocessor controlled



Brushless DC Motor



Digital Display



Pulse mode

DIGITAL DISK TUBE ROTATOR WITH A MICROPROCESSOR & BRUSHLESS MOTOR

- Brushless DC motor for quiet and maintenance free long life operation
- Microprocessor controlled disc rotator with variable speed and time setting, along with last run memory function
- 10 to 80 RPM Adjustable speed range with increment and +/- 1 accuracy
- 1 to 99 minutes timer setting and infinite mode
- User programmable - save up to 9 user defined programs (protocols)
- Pulse mode with alternate clockwise and anticlockwise motion with 2 second intervals for better and thorough mixing
- 0 to 90 degrees adjustable angle
- Automatic Power On in case of power interruption, instrument completes run on remaining duration after power resumption
- Easy removal / installation of Disc plates for replacement & cleaning

Specifications	Description
Capacity (supplied with any one chosen disk plate)	12 tubes x 50 ml, 24 tubes x 15 ml, 44 tubes x 2 ml
Programmable Mode	Set and save up to 9 user defined programs
Variable Speed	10-80 RPM
Motor Type	Brushless motor
Pulse Mode	Alternate clockwise and anticlockwise motion with 2 second intervals
Run Time	1 to 99 mins & Infinite mode
Angle of Disc Plate	Adjustable from 0-90 degrees
Weight	3.9 Kgs
Digital Display	Yes
Dimensions (L x W x H)	383 x 325 x 325 mm
Protection Class	IP21

Description	Cat. No.
Digital Disc Rotator, 12 X 50 mL Disk	VWRA521-2779
Digital Disc Rotator, 24 X 15 mL Disk	VWRA521-2780
Digital Disc Rotator, 44 X 2mL Disk	VWRA521-2781



Strong metal design



Silent operation



Accuracy of +/- 2 RPM



Silent operation



Accuracy of +/- 2 RPM

PLATE TUBEROTATOR

- AC synchronous motor for noiseless operation
- Accommodates upto 22 Blood collection tubes
- Circular rotation motion for gentle yet effective mixing
- 30 RPM fixed speed with +/-2 RPM accuracy
- Continuous/ Infinite operation modes
- Robust construction, strong metal design
- Compact design for bench space efficiency

BLOOD TUBE ROTATOR

- Compact design for bench space efficiency
- AC synchronous motor for noiseless operation.
- Can accommodate upto 10 Blood collection tubes
- Gentle yet effective mixing with circular motion
- 30 RPM fixed speed with +/-2 RPM speed accuracy
- Continuous/Infinite operation modes
- Robust construction, strong metal design
- Maximum operational weight capacity of 1Kg

Specifications	Description
Capacity	12 x 15 ml + 4 x 50ml
	22 x 15 ml
Motor Type	ACSynchronous
Fixed Speed	30 RPM
Run Time	Continuous / Infinite
Speed Accuracy	± 2RPM
Removable Plate	Yes
Weight	1.7 Kgs
Dimensions (L x W x H)	346 x 185 x 145 mm
Protection class	IP21

Specifications	Description
Capacity	10 x 6 ml/10 ml blood collection tubes
Motor Type	ACSynchronous
Speed	30 RPM Fixed speed
Run Time	Continuous / Infinite
Speed Accuracy	± 2RPM
Removable Plate	Yes
Max Loading Capacity	1 Kg
Dimensions (L x W x H)	190 x 135 x 133 mm
Protection class	IP21

Description	Cat. No.
Plate Rotator 12 x 15 ml + 4 x 50ml	VWRA444-1172
Plate Rotator 30 RPM 22 x 15 ml	VWRA444-1173

Description	Cat. No.
Mini Tube Rotator	VWRA444-1187



VWRA444-1181



VWRA444-1182



VWRA444-1183



VWRA444-1184



VWRA444-1185



VWRA444-1186



Microprocessor controlled



Brushless DC Motor



Digital Display



Pulse mode

DIGITAL PLATE TUBE ROTATOR WITH MICROPROCESSOR & BRUSHLESS MOTOR

- Brushless DC motor for quiet and maintenance free long life operation
- Microprocessor controlled plate rotator with variable speed and time setting, along with last run memory function
- 10 to 80 RPM Adjustable speed range with increment and +/-1 accuracy
- 1 to 99 minutes timer setting and infinite mode
- User programmable - save up to 9 user defined programs (protocols)
- Pulse mode with alternate clockwise and anticlockwise motion with 2 second intervals for better and thorough mixing
- Automatic Power On in case of power failure, automatic run on remaining duration after power resumption
- Easy removal / installation of Plates for replacement & cleaning

Specifications	Description
Capacity (supplied with any one chosen plate)	16 tubes x 50 ml, 35 tubes x 15 ml, 55 tubes x 2 ml
Programmable Mode	Set and save up to 9 user defined programs
Variable Speed	10-80 RPM
Run Time	1-99 mins & infinite
Motor Type	Brushless DC motor
Pulse Mode	Alternate clockwise and anticlockwise motion with 2 second intervals
Weight	4.6 Kgs
Digital Display	Yes
Dimensions (L x W x H)	540 x 274 x 186 mm
Protection Class	IP21

Description	Cat. No.
DigitalPlate Rotator Plate: 16x50 mL	VWRA444-1178
Digital plate with Rotator 35x15 mL	VWRA444-1179
Digital Plate Rotator 55x2 mL/5 mL	VWRA444-1180



VWR® TRACEABLE® MEMORY-CARD HUMIDITY/TEMPERATURE/DEW POINT IT RECORDS READINGS FROM ONCE A MINUTE UP TO ONCE EVERY 720 MINUTES ON A SD MEMORY CARD

- Datalogging capabilities that can capture 5.9 million readings with 256 mb removable SD memory card
- Visual and audible alarms indicate when temperature, humidity or dew point rises above and falls below userdefined set points
- USB memory card reader plugs directly into Windows and Mac—no software to install to retrieve date/time of day and readings of sensors
- Supplied: 256 mb SD memory card, USB memory card reader, magnetic strips, Velcro®, wall mount, bench stand, batteries, adaptor, Traceable® Certificate



Extremely sleek design



Pulse mode for thorough mixing



SS top for corrosion resistance



Microprocessor controlled



Microprocessor controlled



Brushless DC Motor



Pulse Mode & Timer Function



SS top for corrosion resistance

MOTORLESS ULTRA SLIM MAGNETIC STIRRER

- No moving parts-truly maintenancefree
- Low aspect ratio (just 13/14 mm thick)
- Microprocessor controlled and last run memory function
- Pulse mode - reverses the direction every 30 seconds for proper mixing
- Software driven gradual acceleration
- Universal power supply- small wall mount adaptor
- IP 65 complaint design (Water spill resistant)
- Corrosion resistant SS top surface for better chemical resistance
- Synchronized speed setting (multiposition)

MOTORLESS ULTRA SLIM MAGNETICSTIRRER

- No moving parts-truly maintenancefree
- Low aspect ratio (just 13/14 mm thick)
- Microprocessor controlled and last run memory function
- Pulse mode - reverses the direction every 30 seconds for proper mixing
- Software driven gradual acceleration
- Universal power supply- small wall mount adaptor
- IP 65 complaint design (Water spill resistant)
- Corrosion resistant SS top surface for better chemical resistance
- Synchronized speed setting (multiposition)

Specifications	VWRA444-1189	VWRA444-1191
Max RPM	1500 RPM	1200 RPM
Speed Setting	from 15 RPM at every 50 RPM	
Capacity	1 x 800 ml	4 x 400 ml
Time Setting	1 to 99 mins	
Digital Display	Yes	
Recommended bar length	25 mm	
Pulse function	Yes	
Sync Mode	NA	Yes
Last run memory	Yes	
Dimensions (L x W x H)	124 x 191 x 14.5 mm	457 x 126 x 13.4 mm
Weight	400 gms	1.5 Kgs
Protection Class	IP 65 (Water spill resistant)	

Description	Cat. No.
Motor Less Magnetic Stirrer, 800mL	VWRA444-1189
Motor Less Magnetic Stirrer 4x400mL	VWRA444-1191

Specifications	VWRA444-1192	VWRA444-1193
Motor Type	Brushless DC motor	
Capacity (H ₂ O)	10 Ltr	10 Ltr (2 Ltr per station)
Speed Setting	200 to 2200RPM (at every 10RPM)	100 to 2200RPM (at every 10RPM)
Timer	1 to 999 mins	Upto 99 hours & 59 mins & infinite mode
Digital Display	Yes	
Pulse Mode	Yes	Programmable (30 to 99secs)
Recommended stir barlength	35 mm	
Last run memory	Yes	
Weight	2.5 Kgs	8 Kgs
Protection Class	IP44	IP42
Dimensions (L x W xH)	335 x 200 x 29 mm	594 x 332 x 45 mm

Description	Cat. No.
Motorized Magnetic Stirrer 10 Ltr	VWRA444-1192
Motorized Magnetic Stirrer 5x2 Ltr	VWRA444-1193



10 Litres Stirring Capacity



Compact Design for Bench Space Efficiency



Brushless DC Motor



Microprocessor Controlled



Digital Display for Speed and Time



Pulse mode

MAGNETIC STIRRER

- Variable speed ranging from 400-2200 RPM
- Closed design for protection against accidental spillage and easy
- Easy to operate-plug & play
- Non slip strength rubber feet
- Small footprint for saving valuable bench space
- Suitable for use in hoods and cold rooms cleaning

HIGH CAPACITY MAGNETIC STIRRER WITH A MICROPROCESSOR & BRUSHLESSMOTOR

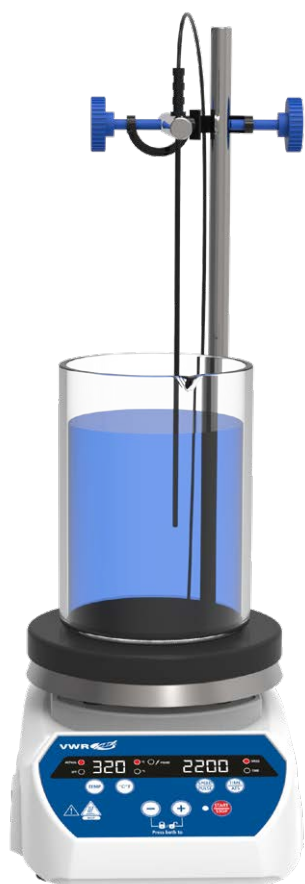
- Brushless DC motor for quiet operation and maintenance free long operation
- Microprocessor controlled stirrer with variable speed and time setting, along with last run memory function
- Adjustable speed ranging from 100-1000 RPM (50L) & 100-600 RPM (200L) with increment of 10 RPM and accuracy of +/- 10 RPM
- Long timer setting from 1 to 99 hours 59 minutes & infinite mode
- Choice of acceleration rates from A1 to A9
- Programmable Pulse with direction change feature - Pulse timing can be set from 30 to 300seconds
- Stainless steel (SS) set up plate for corrosion protection
- Automatic Power On in case of power failure, automatic run on remaining duration after power resumption
- Power Overload safety feature
- Supplied with stir bar and support frame for holding vessel

Specifications	Description
Capacity	10 Litres
Motor Type	DC Motor
Variable Speed	400 -2200 RPM
Set-up plate dimensions	140 x 140 mm
Weight	1.5 Kgs
Dimension (L x W x H)	230 x 150 x 78 mm
Length of stir bar	25 mm
Protection class	IP42

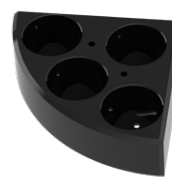
Description	Cat. No.
Analog Magnetic Stirrer 10 Ltr	VWRA444-1195

Specifications	VWRA444-1216	VWRA444-1219
Motor Type	Brushless motor	
Max. Capacity	50 Liters	200 Liters
Variable Speed	100 - 1000 RPM	100 - 600 RPM
Run Time	1-99 hours 59 mins & infinite	
Ramp Up Speed feature	User can select different Acceleration rates (A1-A9 with A9 being the fastest rate and A1 slowest)	
Pulse Mode	Alternating clockwise and anticlockwise motion with 3 sec stop for better and thorough mixing	
Digital Display	Yes	
Accuracy	± 10RPM	
Plate Dimensions (SS)	184 x 184 mm	250 x 250 mm
Max. Stir bar length	80 mm	100 mm
Protection class	IP21	
Structure frame size (With adjustableheight)	394 x 392 x 101 mm	505 x 500 x 105 mm
Weight	10 Kgs (with stand)	14 Kgs (with stand)

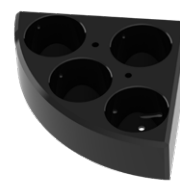
Description	Cat. No.
High Capacity Stirrer, 50 Ltr	VWRA444-1216
High Capacity Magnetic Stirrer, 200 Ltr	VWRA444-1219



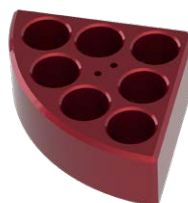
VWRA444-1196



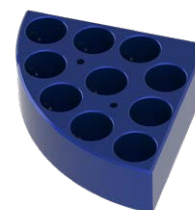
VWRA444-1197



VWRA444-1198



VWRA444-1199



VWRA444-1200



VWRA444-1201



VWRA444-1202



VWRA444-1203



VWRA444-1204v



Microprocessor Controlled



Digital Display



Compact Design for Bench Space Efficiency



Different Top Plate Options

HOT PLATE MAGNETIC STIRRER

- Powerful motor for constant speed delivery under varying load
- Stirring capacity up to 10litres
- Single instrument with 3 optional setup plates - Stainless steel, Ceramic coated SS & Aluminum
- Heater temperature setting from Ambient to 320°C
- Variable speed setting from 200 to 2200 RPM in steps of 10 RPM & long timer range from 1-999 mins & infinite mode
- Microprocessor controlled hot plate stirrer with variable speed and time setting, along with last run memory function
- Auto restart mode automatically resumes stirrer operation in case of power interruption
- Keypad lock function locks down keypad after the user has set the parameters
- Large and clear display for better readability across all parameters, set values readily visible
- Supplied with PT-1000 temperature probe to accurately measure temperature of medium
- Safe temperature circuit for greater reliability
- Small footprint for saving valuable bench space
- LED indication when plate temperature above 50°C
- Optional multiple reaction blocks**

Specifications	Description
Stirring Quantity Max.	10 Litres
Set-up Plate Material*	Stainless steel, Ceramic coated SS, Aluminum
Variable Speed	200-2200 RPM in steps of 10 RPM
Heat Temperature Range	Ambient to 320° C
Run Time	1-999 mins & infinite
Digital display	Shows Speed/Time and Actual/Set temperature alternately
Safe temperature circuit	Yes
Set-up plate dimensions	140 mm
Weight	1.4 Kgs
Dimensions (L x W x H)	248 x 156 x 104 mm
Length of stir bar	25 mm
Protection class	IP21

Description	Cat. No.
Digital Hot Plate Stirrer, Heating 320 °C	VWRA521-2782



Microprocessor
Controlled



Digital
Display



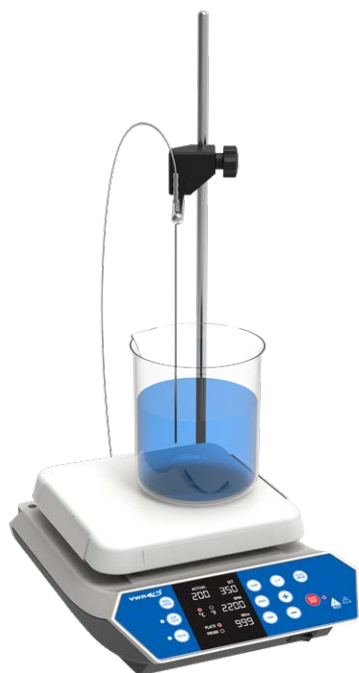
Compact Design
for Bench Space
Efficiency

HOT PLATE MAGNETIC STIRRER

- Powerful servo DC motor for constant speed delivery under varying load
- Stirring capacity up to 20litres
- Nano crystal full ceramic top plate ensures chemical resistivity & constant heat transfer
- Highly resistant and inert body, even to strong chemicals
- Heater temperature setting from Ambient to 550°C
- Variable speed setting from 200 to 2200 RPM in steps of 10 RPM & long timer range from 1-999 mins & infinite mode
- Microprocessor controlled hot plate stirrer with variable speed and time setting, along with last run memory function
- Auto restart mode automatically resumes stirrer operation in case of power interruption
- Keypad lock function locks down keypad after the user has set the parameters
- Programmable pulse mode with run pause run feature
- 5 heating modes for rapid, gradual & accurate heating
- Large and clear display for better readability across all parameters, set values readily visible
- Safe temperature circuit cut up to 575°C for greater reliability
- Small footprint for saving valuable bench space • LED indication when plate temperature above 50°C
- Compatible with PT-1000 temperature probe to accurately measure temperature of medium
- Keypad lock feature & Auto restart feature

Specifications	Description
Stirring Quantity Max.	20 Litres
Set-up plate material	Nano crystal full ceramic top plate
Variable Speed	200-2200 RPM
Heat Temperature Range	Ambient to 550° C
Temp Accuracy	± 1°C
Run Time	1-999 mins & infinite
Digital display	Shows Speed/Time and Actual/Set temperature alternately
Safe temperature circuit	Yes
Set-up plate dimensions	180 x 180 mm
Weight	4.9 Kgs
Dimensions (L x W x H)	330 x 225 x 113 mm
Length of stir bar	25 mm
Protection class	IP21

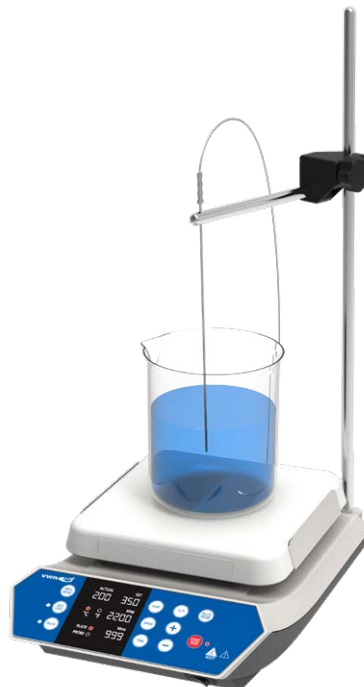
Description	Cat. No.
Hot Plate Magnetic Stirrer with Ceramic Plate, Temperature 550 °C, Speed 2200 RPM, 20 Ltr Capacity	VWRA444-1259



Slip Detection mode



Microprocessor controlled



HOT PLATE MAGNETIC STIRRER

- Robust top made up of nanocrystalline glass ceramic for resistance against temperature shocks and liquid splash
- Elevated control panel for protection against leaking liquids
- Display for easy value setting, all set values readily visible without toggle. No shared display
- Slip detection mode for detecting stir bar slip and automatic optimization of stirring operations to ideal limits
- Variable speed setting from 200 to 2200 RPM in steps of 10 RPM with variable timer setting
- 3 heating modes for rapid, gradual & accurate heating
- Heating range from ambient to 550°C / 350°C
- Pulse mode for vigorous mixing of liquids • Constant speed across diverse loads and viscosity
- Compatible with PT-1000 Temperature Probe for accurate measurement of media temperature (available as an optional accessory)
- Powerful BLDC motor for constant speed delivery under varying load conditions
- Safe temperature setting up to 575°C / 375°C for protection against overheating and better reliability
- Support stand with boss head
- Accessories : PT 1000 Temperature probe

Specifications	VVRA444-1205	VVRA444-1206
Stirring Quantity in Ltr (max)		20
Heating Temp Range (°C)	Ambient to 550°C	Ambient to 350°C
Speed Range (rpm)	200 - 2200 in steps of 10RPM	
Number of Stirrer positions	1	
IP Rating	IP21	
Setup plate Feature	Ceramic Plate	
Set-up Plate Dimensions	180 x 180 mm	
RS 232 interface	Yes	
Temp Accuracy	± 1°C	
Temp Accuracy of PT-1000 Probe	± 0.1°C	
Safety temp circuit	Yes	
Weight	5.4 Kgs	
Slip detection	Yes	
External control panel	Optional	
Dimensions (L x W x H)	330 x 225 x 113 mm	
Length of stir bar	25 mm	

Description	Cat. No.
Digital Hot Plate Stirrer 350°C	VVRA444-1205
Digital Hot Plate Stirrer 550°C	VVRA444-1206



Auto Restart : Stirrer automatically resumes operation in case of power interruption or error condition



Lock Mode: This feature locks down complete keypad functioning after the user has set the parameters



No Toggle Display: Critical parameters are displayed without any toggle for easy operation monitoring

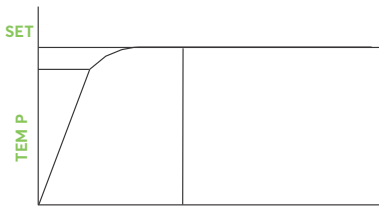


Unique Design: Electronic circuit is uniquely positioned to ensure there is no damage to equipment in case of liquid spillage

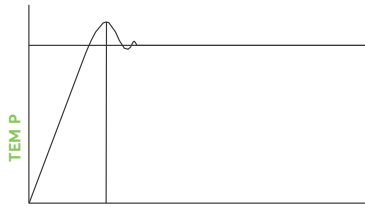


Pulse Mode: Reverse the stirring motion at programmable time for thorough mixing

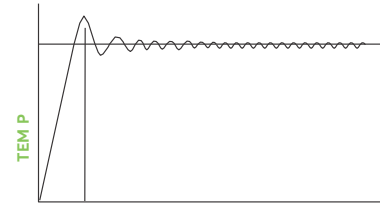
HEATING MODES FOR RAPID, GRADUAL & ACCURATE HEATING



1) H01: Slow heating with High Accuracy



2) H02: Fast heating with High Accuracy



3) H03: Rapid Heating with Overshoot



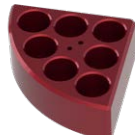
VWRA444-1196



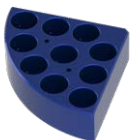
VWRA444-1197



VWRA444-1198



VWRA444-1199



VWRA444-1200



VWRA444-1201



VWRA444-1202



VWRA444-1207



VWRA444-1208

STIRRER ATTACHMENTS

VWRA444-1205/ VWRA444-1206 /
VWRA521-2782 / VWRA444-1259

Capacity	Cat. No.
Carrying Plate	VWRA444-1196
4 X 20 ml - Quarter block	VWRA444-1197
4 X 30 ml - Quarter block	VWRA444-1198
7 X 16 ml - Quarter block	VWRA444-1199
10 x 8 ml - Quarter block	VWRA444-1200
12 x 4 ml - Quarter block	VWRA444-1201
Round Bottom Reaction Block 500 ml	VWRA444-1202
	VWRA444-1207 (for VWRA444-1206)
	VWRA444-1204 (for VWRA521-2782)
PT 1000 Probe	VWRA444-1208 (for VWRA444-1206)
	VWRA444-1203 (for VWRA521-2782)
Stand With Boss Head	



Brushless DC Motor



Microprocessor Controlled



Programmable Pulse Mode



Digital Display

5/10/15 STATION HEATED MAGNETIC STIRRER WITH A MICROPROCESSOR & BLDC MOTOR

- Powerful BLDC motor delivers constant speed
- Homogenous temperature distribution across heating plate
- Microprocessor controlled multi position stirrer with variable speed
- Programmable Pulse mode - reverses direction for better and time setting, along with last run memory function mixing
- High performance multi position stirrer with 5/10/15 stirring positions
- Closed design allows easy cleaning and protects the with optimum use of laboratory space equipments from accidental spills
- Variable speed ranging from 300-1500 RPM in steps of 10 RPM
- Water proof heater with in-built safety cut-off
- Timer setting from 1-999 mins and infinite
- Non slip strength rubber feet
- Heater temperature setting from ambient to 120°C

Specifications	VWRA444-1212	VWRA444-1213	VWRA444-1214
Motor Type	Brushless DC motor		
Number of Stirring Positions	5	10	15
Stirring Quantity Max	400 ml per position		
Variable Speed	300-1500 RPM in steps of 10 RPM		
Heater Temperature Range	Ambient to 120° C		
Run Time	1-999 mins & infinite		
Pulse Mode	Programmable pulse mode - user can set time from 30 to 99seconds		
Set-up Plate Material	Stainless steel plate with silicone sheet		
Set-up Plate Dimensions	565 x 136 x 75 mm	565 x 196 x 75 mm	565 x 282 x 75 mm
Weight	3 Kgs	5 Kgs	7 Kgs
Length of stir bar	25 mm		
Protection Class	IP42		

Description	Cat. No.
	VWRA444-1209
	VWRA444-1210
	VWRA444-1211
	VWRA444-1212
	VWRA444-1213
	VWRA444-1214



VWR® TRACEABLE® THERMOMETER/CLOCK/HUMIDITY MONITOR
SIMULTANEOUSLY DISPLAYS TIME OF DAY, TEMPERATURE, AND HUMIDITY

- Features: MIN/MAX memory, memory clear, °F/°C switchable, 12/24-hour clock
- At the touch of a button, memory recalls the highest and lowest temperature and humidity readings
- Internal sensors make it ideal for use in hoods, storerooms, cleanrooms, incubators, drying chambers and environmental cabinets
- Supplied: stand, wall mount, double-back tape, batteries, Traceable® Certificate



BLDC Motor



Adjustable Speed



IP Protected

OVER HEADSTIRRER

- Brushless DC motor for quiet operation and maintenance free long operation
- Microprocessor controlled for consistent accuracy with viscous and non-viscous liquids
- Stirs viscosity up to 1,000 mPas or 10 L volume capacity (H₂O)
- Adjustable speed ranging from 50 Up to 2200 RPM
- Safety cut for overload
- Plug & play design for easy usage

Specifications	Description
Motor Type	Brushless DC motor
Capacity(H ₂ O)	10 L
Speed Range	50-2200 RPM
Torque	8 Ncm
Viscosity	1000 mPas
Protection Class	IP42
Weight	1.5 Kgs

Description	Cat. No.
Overhead Stirrer, Impeller 50X8X300 mm	VWRA441-0509



Microprocessor Controlled



Power Intermittent



Pulse Mode



BLDC Motor



Large Display

OVER HEAD STIRRERS

- Brushless DC motor for quiet operation and maintenance free long operation
- Microprocessor controlled for consistent accuracy with viscous and non-viscous liquids
- Viscosity up to 30,000 mPas & 40 L volume
- Adjustable speed ranging from 50 RPM to 2000 RPM
- Long timer setting from 1min to 99 hours 59 mins & continuous mode
- Reversible mixing motion - CW/CCW
- Large digital display for all the parameters at one glance
- Uninterrupted operation through Smartcontrol
- Safety cut for overload, over current & overtemperature
- Counter reaction to speed change
- Push through shaft for viscous liquid or smaller vessels
- PTFE impeller are available on request

Specifications	VWRA441-0510	VWRA441-0511	VWRA441-0508	VWRA441-0507
Motor Type	Brushless DC motor			
Capacity (H ₂ O)	10 L	20 L	25 L	40 L
Speed Range	50-2000 RPM	50-1000 RPM	50-2000 RPM	50-1000 RPM
Torque	8 Ncm	15 Ncm	20 Ncm	40 Ncm
Viscosity	4000 mPas	8000 mPas	10000 mPas	30000 mPas
Timer	1 min to 99 hr 59mins & infinitemode			
Direction of Rotation	Reversible - CW / CCW			
Protection Class	IP54			
Dimensions (Head) (LxWxH)	79 x 225 x 179 mm			
Weight	1.7 Kgs	1.7 Kgs	1.8 kgs	1.8 Kgs

Description	Cat. No.
Overhead Stirrer 8 Ncm	VWRA441-0510
Overhead Stirrer 15 Ncm	VWRA441-0511
Overhead Stirrer 20 Ncm	VWRA441-0508
Overhead Stirrer 40 Ncm	VWRA441-0507



OVER HEAD STIRRERS

- Brushless DC motor for quiet operation and maintenance free long operation
- Microprocessor controlled for consistent accuracy with viscous and nonviscous liquids
- Viscosity up to 70,000 mPas & 100 L volume
- Adjustable speed ranging from 50 Up to 2000 RPM
- Long timer setting from 1min to 99 hours 59 mins & continuous mode
- Reversible mixing motion - CW/CCW
- Large digital display for all the parameters at one glance • Uninterrupted operation through Smartcontrol
- Safety cut for overload, over current & overtemperature
- Counter reaction to speed change
- Push through shaft for viscous liquid or smaller vessels

Specifications	VWRA441-0512	VWRA441-0513	VWRA441-0514
Motor Type	Brushless DC motor		
Capacity (H2O)	50 L	75 L	100 L
Speed Range	60-2000 RPM	60-2000 RPM	60-1300 RPM
Torque	50 Ncm	75 Ncm	100 Ncm
Viscosity	30000 mPas	50000 mPas	70000 mPas
Timer	1 min to 99 hr 59mins & infinitemode		
Direction of Rotation	Reversible - CW / CCW		
Protection Class	IP42		
Dimensions (Head) (L x W x H)	102 x 249 x 242 mm		
Weight	5.1 Kgs		

Description	Cat. No.
Overhead Stirrer 50 Ncm	VWRA441-0512
Overhead Stirrer 75 Ncm	VWRA441-0513
Overhead Stirrer 100 Ncm	VWRA441-0514

OVERHEAD ACCESSORIES

Shaft Length	Description	FlowPattern	Cat. No.
550mm	Straight Blade Impeller (35 x 12 x 550 mm)	Radial	VWRA441-0505
550mm	Straight Blade Impeller (50 x 12 x 550 mm)	Radial	VWRA441-0504
550mm	Pivoting Blade Impeller (60 x 15 x 550 mm)	Radial	VWRA441-0503
550mm	Collapsible Blade Impeller (80 x 10 x 550 mm)	Radial	VWRA441-0502
550mm	Square Blade Impeller (38 x 38 x 550 mm)	Tangential	VWRA441-0501
800mm	Square Blade Impeller (70 x 70 x 800 mm)	Tangential	VWRA441-0499
550mm	Anchor Blade Impeller (45 x 45 x 550 mm)	Tangential	VWRA441-0498
800mm	Anchor Blade Impeller (90 x 80 x 800 mm)	Tangential	VWRA441-0497
550mm	Paddle Blade Impeller (70 x 70 x 550 mm)	Tangential	VWRA441-0496
800mm	Paddle Blade Impeller (70 x 70 x 800 mm)	Tangential	VWRA441-0495
550mm	Paddle Blade Impeller (70 x 80 x 550 mm)	Tangential	VWRA441-0494
800mm	Paddle Blade Impeller (70 x 80 x 800 mm)	Tangential	VWRA441-0493
550mm	A01 Propeller Impeller (50 x 8 x 550 mm)	Axial	VWRA441-0492
550mm	A02 Propeller Impeller (100 x 15 x 550 mm)	Axial	VWRA441-0491
800mm	A03 Propeller Impeller (130 x 15 x 800 mm)	Axial	VWRA441-0490
	Plate Stand 220 mm x 320 mm with rod height of 560 mm (Max. load 5ltrs)		VWRA441-0489
	Plate Stand 220 mm x 320 mm with rod height of 800 mm (Max. load 5ltrs)		VWRA441-0488
	Plate Stand 220 mm x 320 mm with rod height of 1000 mm (Max. load 5ltrs)		VWRA441-0487
	Bosshead Clamp for plate stand (common for all rod lengths)		VWRA441-0486
	H Stand Stand 500 x 450 x 1020 mm without bosshead clamp		VWRA441-0485
	Bosshead Clamp for H-Stand		VWRA441-0484
	Chuck		VWRA441-0483





Wide temperature range



Removable blocks



Digital Display

DOUBLE BLOCK DIGITAL THERMAL DRY BATH

- Dry heating block with temperature control range from Ambient +5° C to 120°C
- Aluminium block for rapid heating & constant temperature across the blocks throughout operation, and resistance against chemical spillage and temperature shocks
- Heating blocks with long timer range from 1min- 99hr 59mins & infinite mode
- Large and clear display for better readability across parameters, all set values are readily visible without toggle. No shared display.
- Corrosion free SS top and heating wells
- User programmable- set and save up to 99 different user defined programs
- Supplied with PT-1000 temperature probe & thermometer well for accurate measurement of 2 temperature
- Compatible with varied tube sizes and convenient lifting gear for cleaning and disinfecting
- Built in safe temperature protection

*All blocks to be ordered separately

**PT 1000 probe & block lifter to be supplied as standard accessories

Specifications	Description
Temperature Range	Ambient +5° C to 120°C
Temperature Accuracy	± 0.5°C
Temperature Uniformity	± 0.2°C
Number of Blocks	2
Set-up Block material	Aluminum
Display	Digital
Timer	1min - 99hr 59mins & infinite mode
Programmable Mode	Save upto 99 user defined programs
Protection class	IP21
Dimensions (L x W x H)	108 x 72 x 50 mm

Description	Cat. No.
Double Block Digital Thermal Dry Bath, Temperature Ambient +5°C To 120°C without Blocks	VWRA460-0360
Block for Micro Tubes (28 X 1.5/ 2 MI)	VWRA460-0361
Hybrid Block (9 X 1.5/2MI, 32 X 0.2 mL & 20 X 0.5 mL Tubes)	VWRA460-0362
12 Tubes X 15 mL Block	VWRA460-0363
5 Tubes X 50 mL Block	VWRA460-0364

VWR® equipment and instruments

VWR offers a wide range of equipment and instrumentation to meet your needs and enable science in any workflow.

To learn more, visit in.vwr.com





COOLING - HEATING INCUBATOR

- Digital Temperature control from Ambient less 15°C to 60°C
- Compact footprint, usable on small bench space.
- Accepts multiple types of flask up to 2L
- Internal power outlet for installing small shaker, mixer or other instruments

Specifications	Description
Temperature Range	Ambient less 15 °C to 60 °C
Temperature Accuracy	0.5 °C (at 37 °C)
Temperature Uniformity	± 1.5 °C (at 37 °C)
Temperature Increments	± 1°C
Dimensions (L x W x H)	337 x 370 x 475 mm
Capacity	25L
Weight	6.5 kgs
Electrical	100-240V, 50-60Hz

Description	Cat. No.
Cooling & Heating Incubator, Temperature Ambient -15°C To 60°C , 25 Ltr Capacity	VWRA390-1354

VWR® for lightening the weight load

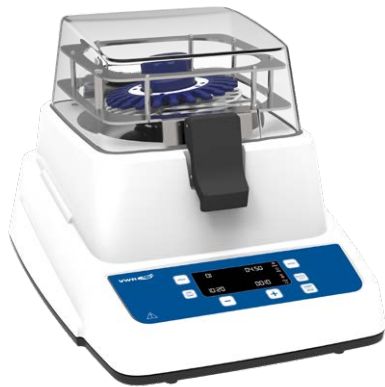
Analytical balances

- Readability d:
 - 0,1 mg = 100 µg
 - 4 digits 0,0001 g
- Weighing range from 120 to 610 g

Precision balances

- Readability d:
 - From 1 to 100 mg
 - From 3 digits 0,001 g to 1 digit 0,1 g
- Weighing range from 210 to 20 000 g or 20 kg





Brushless DC Motor



Imbalance Detection



Digital Display



Lid Safety Lock



Compact & Light Weight



Digital Display



Lid Safety Lock

CELL / TISSUE HOMOGENIZER

- Ideal homogenizer for extraction from samples like bacterial/ yeast cells, plant tissues, animal tissues etc. for molecular analysis
- Accommodates wide range of screw cap homogenizing tubes sizing 24 x 1.5/2 & 12 x 7 ml with adaptors
- Powerful BLDC maintenance free motor - Homogenizes the most challenging samples
- Designed to generate lesser heat and convenient loading
- Up to 99 programmable memory settings
- Variable cyclic intervals for effective homogenization
- Features an integrated lid lock for user safety, prevents lid opening during operation
- Compatible with varied tube sizes and convenient lifting gear for cleaning and disinfecting
- Easy user interface with large digital display

Specifications	Description
Agitation Speed Range	0.80 m/s ~ 7.50 m/s (in steps of 0.05 m/s) 490 rpm - 4550 rpm (in step of 30 rpm)
Run Time	1 second to 90 second (in 1 sec increment)
Pause Time	10 second to 600 second (in 1 sec increment)
Programmable (Stored)	99 Saved Programs
Number of Cycles	10
Number of Samples (Capacity)	1-24 samples (24 x 2 ml & 12 x 7 ml)
Weight	32.5 Kgs
Dimesnions (L x W x H)	350 x 490 x 315 mm

Description	Cat. No.
Mini Cell Homogenizer, Speed 4000 RPM, 3 X 2 mL Capacity	VWRA432-0422

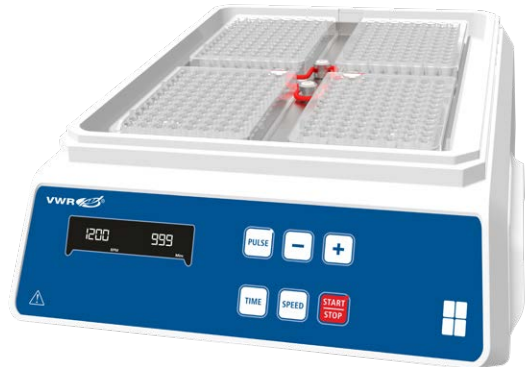
MINI CELL HOMOGENIZER

- Ideal homogenizer for extraction from samples like bacterial/ yeast cells, plant tissues, animal tissues and other tough samples
- Accommodates wide range of screw cap homogenizing tubes sizing 3 x 2 ml
- Powerful motor - Homogenizes the most challenging samples
- Designed to generate lesser heat and convenient loading
- Variable cyclic intervals for effective homogenization through pulse
- Lid lock safety - operation stop on opening lid
- Easy user interface with large digital display
- Small foot print for better work space efficiency

Specifications	Description
Capacity	3 X 2ml
Speed Range	2800 to 4000RPM
Run Time	3 second to 180 second
Pulse mode On/off timer	3 second to 99 second
Operating Condition	4°C to 45°C
Weight	2.8 Kgs
Dimensions (L x W x H)	235 x 158 x 140 mm

Description	Cat. No.
Cell/ Tissue Homogenizer, Speed 4550 RPM, 24 X 1.5/2.0 mL Capacity	VWRA432-0430

Accessories for VWRA432-0422 & VWRA432-0430	Pack Size	Cat. No.
2 ml Screw Cap Tubes (Non sterile)	500 nos	VWRA4320433
0.4-0.6 mm Glass Beads	250 grm	VWRA4320434
0.8-1.2 mm Glass Beads	250 grm	VWRA4320435
2.5-3.0 mm Glass Beads	250 grm	VWRA4320436
1.0-1.2 mm Zirconium Beads	250 grm	VWRA4320437
1.4-1.7 mm Zirconium Beads	250 grm	VWRA4320438



Microprocessor Controlled



Brushless DC Motor



Digital Display




Counter balance for stable operation

PERSONAL MICROPLATE SHAKER

- 3mm orbital motion in VWRA444-1222 and 2mm in VWRA444-1221 for thorough mixing in microplates
- Brushless DC motor for quiet operation and maintenance free long life
- Microprocessor controlled microplate shaker with variable speed and time setting, along with last run memory function
- Microplate platform and rubber o-ring for firm grip on plate
- Easy access to all 4 plates for loading and unloading (VWRA444-1222)
- Digital display for easy operation • Pulse mode for vigorous shaking (VWRA444-1222)
- Independent start switch activates shaker for preset speed and time for repeatability in tests
- Low voltage instrument for ensuring user and product safety
- Accepts all standard microplates


Specifications	VWRA444-1221	VWRA444-1222
Motor Type	Brushless DC motor	
Orbital Motion	2 mm	3 mm
Number of plates	1	4
Variable Speed	300 RPM to 1800 RPM	200 RPM to 1200 RPM
Run Time	1 to 99 mins & infinite	1 to 999 mins & infinite
Pulse mode	No	Yes
Maximum Volume	96 / 384 wellplate	4 x 96 / 384 well plate
Inbuilt Counter balance	Yes	Yes
Dimensions (L x W x H)	127 x 85 x 86 mm	88 x 343 x 195 mm
Digital Display	Yes	Yes
Attachments (included in standard pack)	Replaceable Clamps Foam attachment for 20 Microtubes	NA

Description	Cat. No.
Personal Microplate Shaker, 300 RPM to 1800 RPM	VWRA444-1221
Personal Microplate Shaker, 200 RPM to 1200 RPM	VWRA444-1222




Buying on VWR Lab Supplies is as easy as 1-2-3-4


1. REGISTER



2. EXPLORE



3. SELECT



4. ORDER

Email/Username

Password

LOGIN

Register Forgot Password


Browse Categories

A B C D E F G H I J

Adhesives


Aluminum Foil

Ampules



You haven't ordered any items yet!

Please browse/search for products and purchase those items.



Instantly know the status of your order



Microprocessor Controlled



Brushless DC Motor



Digital Display



Pulse mode for thorough mixing



Microprocessor Controlled



Brushless DC Motor



Digital Display



Momentary pause in Pulse mode

4 PLATE INCUBATED SHAKER

- 3 mm orbital motion for thorough mixing in microplates
- Brushless DC motor for quiet operation and maintenance free long life
- Temperature setting range from Ambient +3°C to 70°C
- Rubber o-ring for firm grip on plate
- Adjustable speed ranging from 200 to 1200 RPM • Critical parameters like Speed, Time & Set & Actual temperature are digitally displayed
- Microprocessor controlled digital display
- Programmable pulse mode for vigorous shaking in clockwise and counter-clockwise direction
- Long timer setting up to 99 hours & 59 minutes
- Compatible with all skirted microplates
- Easy to clean and maintain
- Can accommodate four deepwell plate

DIGITAL 3D SHAKER WITH A MICROPROCESSOR & BRUSHLESS MOTOR

- Brushless DC motor for quiet and maintenance free long operation
- Three dimensional rocking / tumbling motion for homogenous mixing
- Microprocessor controlled 3D shaker with variable speed and time setting, along with last run memory function
- Variable speed setting from 10 to 80 RPM for 3 kg shaker and 15-120 RPM for 5 kg shaker in steps of 5 RPM
- Long timer range from 1-999 mins & infinite mode
- Non-slip rubber feet for stable operation
- User Programmable- set and save up to 9 user defined programs (protocols)
- Unique 'Run-Pause-Run' pulse mode - set time from a range of 30 to 99 seconds
- Includes spiked rubber mat & an optional accessory of sticky pad mat
- Easy to clean and protects the equipments against penetration of liquids. (IP 21 protection)

Specifications	Description
Motor Type	Brushless DC motor
Orbital Motion	3 mm
Numbers of plates	Upto 4
Heat Temperature Range	Ambient +3°C to 70°C
Temperature Uniformity	±0.3°C
Variable Speed	200 RPM to 1200 RPM
Run Time	1 to 999 mins & infinite
Pulse Mode	Programmable (30 sec to 99 sec)
Maximum Volume	4 x 96/384 micro well plate
Inbuilt Counterbalance	Yes
Dimensions (L x W x H)	365 x 196 x 150 mm
Weight	9.5 Kgs

Description	Cat. No.
4 Plate Incubated Shaker	VWRA444-1223

Specifications	VWRA444-1224	VWRA444-1225
Weight (Capacity)	3 Kg	5 Kg
Variable Speed	10-80 RPM	15-120 RPM
Motor Type	Brushless DC motor	
Movement	Tumbling 7°	
Run Time	1-999 mins & infinite	
Programmable Mode	User can set and save upto 9 user defined programs (protocols)	
Pulse Mode	Unique Run-Pause-Run pulse mode - User can set time from 30 to 99secs	
Attachment (included in standard pack)	Spiked Rubber Mat	
Optional Attachment	Sticky Pad Mat	
Plate size	307mm x 267 mm	
Weight	4.25 Kgs	9 Kgs
Protection class	IP21	

Description	Cat. No.
Digital 3D Shaker with a microprocessor & brushless motor, 10-80 RPM	VWRA444-1224
Digital 3D Shaker with a microprocessor & brushless motor, 15-120 RPM	VWRA444-1225



Microprocessor Controlled



Brushless DC Motor



Pulse Mode



User Programmable



Microprocessor Controlled



Brushless DC Motor



Pulse Mode



User Programmable

10MM / 20MM, MULTIPURPOSE PLATFORM SHAKER

- Platform shaker with true Orbital and Linear reciprocating motion, for shaking mass upto 7.5kg
- Brushless DC motor for long life and maintenance free operation
- Dedicated display for Speed, Time & Program parameters
- Time ranging from 1 min to 99 hours & 59 minutes
- Program mode allows setting motion, direction, speed, time, dwell time, sequence and loop operation
- Save up to 6 programs, each with 9 sub-programs
- Different platform attachments for using vessels of all shapes and sizes
- Protection rating IP21

*While ordering do specify the motion type & displacement (linear/ orbital -10/20 mm) & the attachment

30 MM - 70 MM DIAMETER, ORBITAL / LINEAR MOTION

- Platform shaker with true Orbital and Linear reciprocating motion, for shaking mass upto 15 Kg.
- Brushless DC motor for long life and maintenance free operation
- Dedicated display for Speed, Time & Program parameters
- Time ranging from 1 min to 99 hours & 59 minutes
- Program mode allows setting motion, direction, speed, time, dwell time, sequence and loop operation
- Save up to 6 programs, each with 9 sub-programs
- Different platform attachments for using vessels of all shapes and sizes
- Protection rating IP21

*While ordering do specify the motion type & displacement (linear or orbital / 30 -70 mm) & the attachment

Specifications	VWRA444-1229/30	VWRA444-12231/32
Shaking movement	Orbital / Linear	
Orbital diameter	10 mm	20 mm
Max Weight	Upto 7.5 Kg	Upto 7.5 Kg
Speed	50 RPM To 500 RPM	50 RPM To 300 RPM
Motor Type	Brushless DC motor	
Time Setting Range	1 min to 99.59 hrs	
Protection Class	IP21	
Programable feature	6 programs with each program having 9 sub-programs	
Platform Size (LxW)	330 x 330 mm	
Program Looping	Yes	
Dimensions (L x W xH)	350 x 408 x 99 mm	
Weight	10 Kgs	

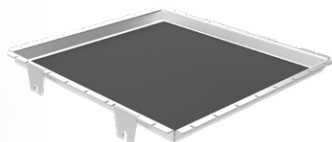
Description	Cat. No.
Platform Shaker 10 mm Orbit, Orbital	VWRA444-1229
Platform Shaker 10 mm Orbit, Linear	VWRA444-1230
Platform Shaker 20 mm Orbit, Orbital	VWRA444-1231
Platform Shaker 20 mm Orbit, Linear	VWRA444-1232

Specifications	VWRA444-1246	VWRA444-1247
Shaking movement	Orbital / Linear	
Orbital diameter	30, 40, 50 mm	60 mm, 70 mm
Speed	50 To 300 RPM	50 To 200RPM
Max Weight	Upto 15 Kg	
Motor Type	Brushless DC motor	
Time Setting Range	1 min to 99.59 hrs	
Platform Size (L x W)	745 mm x 490 mm	
Protection Class	IP21	
Programable feature	6 Programs with each program having 9 sub - Programs	
Program Looping	Yes	
Dimensions (L x W xH)	825 x 625 x 165 mm	
Weight	60 Kgs	

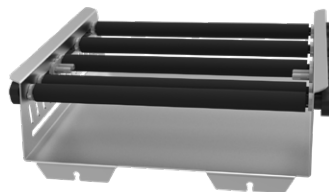
Description	Cat. No.
Platform Shaker, 15 Kg, Orbital	VWRA444-1246
Platform Shaker, 15 Kg, linear	VWRA444-1247



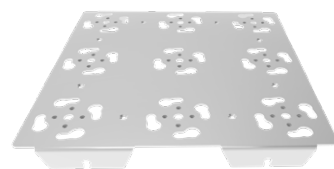
VWRA444-1233



VWRA444-1234



VWRA444-1235



VWRA444-1236

SHAKER ATTACHMENTS

VWRA444-1229/30/31/32 Platform Shaker Attachments

Description	Cat. No.
Universal platform with adjustable bars (Flask capacity- 13 x 100ml / 13 x 150ml / 9 x 250ml / 6 x 500 ml / 5 x 1000ml)	VWRA444-1233
Disk attachment Base plate with slip resistance tray	VWRA444-1234
Funnel Attachment	VWRA444-1235
Base plate for plastic clamps (Capacity- 9 clamps x 250ml / 9 clamps x 500ml) No attached included	VWRA444-1236
Plastic clamps for 250 ml flask suitable for	VWRA444-1237
Plastic clamps for 500 ml flask	VWRA444-1238
Stainless steel clamp for 100 ml flask suitable for base plate	VWRA444-1240
Stainless steel clamp for 150 ml flask suitable for base plate	VWRA444-1241
Stainless steel clamp for 250 ml flask suitable for base plate	VWRA444-1242
Base plate for SS clamps (Capacity- 9 clamps x 500ml / 5 clamps x 1000ml) No clamps included	VWRA444-1243
Stainless steel clamp for 500 ml flask suitable for base plate	VWRA444-1244
Stainless steel clamp for 1000 ml flask suitable for base plate	VWRA444-1245



VWRA444-1248



VWRA444-1249

VWRA444-1246 /47 Platform Shaker Attachments

Description	Cat. No.
Universal platform with adjustable bars (Flask capacity- 44 x 100ml / 36 x 150ml / 36 x 250ml / 25 x 500 ml / 13 x 1000ml)	VWRA444-1248
Base plate for plastic clamps (Capacity 24 x 250 ml / 24 x 500 ml) Clamps not included	VWRA444-1249
Plastic clamp 250 ml suitable for base plate	VWRA444-1237
Plastic clamps 500 ml suitable for base plate	VWRA444-1238